

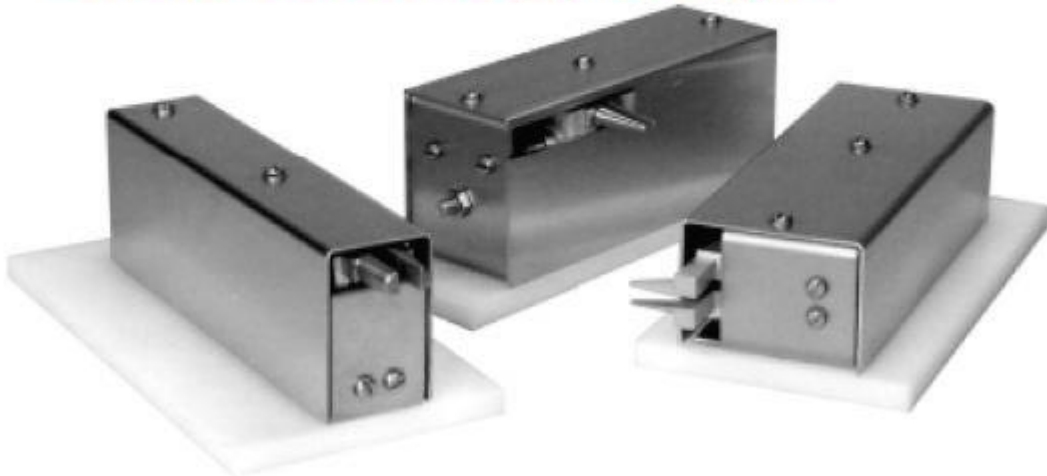
MEDICAL TUBING, EXPANDING, CUTTING, SLITTING & BONDING SOLUTIONS

from



LAKEVIEW EQUIPMENT, INC.

Cleanroom Devices & Equipment Supplier



Pneumatic Tube Expanders
Heated Jaw/Mandrel Tube Expanders
Tube Cutters & Slitters
Solvent Dispensers
Pneumatic Clean Room Press

LAKEVIEW EQUIPMENT, INC.

1327 W. Washington Blvd #5F, Chicago, IL 60607

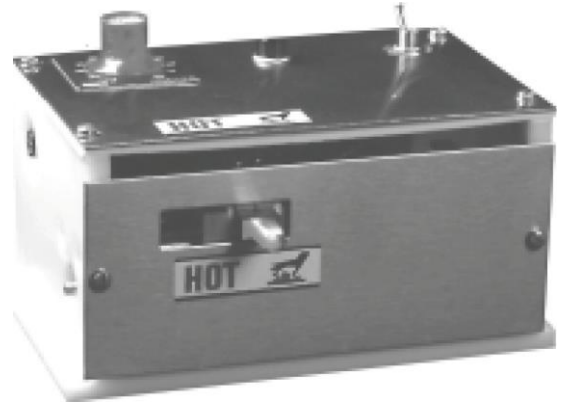
PHONE: 847-674-2300 | FAX: 847-673-2319 | E-MAIL: sales@lakeviewequipment.com

For more information visit our website at www.lakeviewequipment.com.

685H Heated Tube Expander

Jaws Heat to 350° for Vinyl/Teflon Tubing

- Heated jaws soften tubing enough to ease expansion without splitting the ends.
- Especially suited to vinyl and Teflon. May be used with polyurethane and polyethylene.
- For other materials, see Model 875AC, page 2, or Model 875BC, page 3.
- Unit is supplied with a nonmarring base, and a smooth, infinite-control foot pedal with regulator and gauge.
- Adjustable jaw expansion.
- Power requirements:
120 VAC, 60Hz, 5 Amps
Temperature controller fuse: Ferraz 380V, 16A
System Fuse: IOA
U.L. Listed components
- Five interchangeable jaw sets are available. See table below. Custom jaws can be provided on request (consult factory).



*685H Tube Expander shown with
J-3 Jaws Size: 6-1/2f x 12f x 5-1/2f*

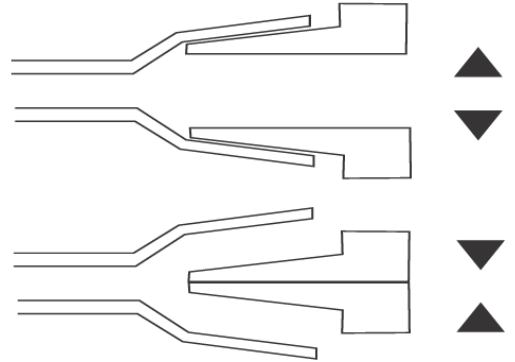
Tube I.D. (in.) Tube I.D. (mm) Jaw No.

.06/.12	1.5/3	J-1
.12/.18	3/4.5	J-2
.18/.24	4.5/6	J-3
.24/.31	6/7.8	J-4
.31/.37	7.8/9.3	J-5

How It Works

1. Turn on unit (red light will glow). Allow about 30 minutes for selected temperature to stabilize. (Note: temperature control is not regulated by degrees. Set control to 50; try tubing. Increase or decrease heat as necessary.) Leave tube on jaws long enough to soften material before expanding.

2. Place tube on jaws, step on foot pedal. Jaws will separate and spread tubing.



3. Release foot pedal and jaws will close. Remove tube from the jaws.

4. Immediately insert fitting into tube.

How to Order

Order by Model No. followed by jaw size.

Example:

685H with J-3 jaw can be used with Teflon/ vinyl tubing with an I.D. of .187i and will spread tubing 3/8i or more, depending upon setting of jaw stop adjustment.

For more information, call **(847) 674-2300** or email sales@lakeviewequipment.com. You may also visit our website at www.lakeviewequipment.com.

Warranty & Disclaimer Notice

Lakeview Equipment, Inc. warrants each product manufactured by it to be free from defects in material and workmanship under normal use and service within ninety (90) days from the date of shipment. The purchaser must give notice of any defect within ninety (90) days, return the product intact, and prepay transportation charges. The obligation of Lakeview Equipment, Inc. under this warranty is limited to repair or replacement at the factory. This warranty shall not apply to any product which has been repaired or altered outside of Lakeview Equipment, Inc. factory, or which has been subjected to misuse, negligence, accident, incorrect connection by others, or improper installation.

This warranty is expressly in lieu of any other warranties, expressed or implied, including any implied warranty of merchantability or fitness for a particular purpose. The remedy provided under terms of the warranty is the exclusive remedy of the purchaser. Under no circumstances will Lakeview Equipment, Inc. be responsible for other direct, incidental or consequential damage. The right is reserved to change designs and/or specifications without notice. All data, dimensions and tables in this catalog have been thoroughly checked. However, we cannot assume responsibility for possible errors or omissions.

LAKEVIEW EQUIPMENT, INC.

1327 W. Washington Blvd #5F, Chicago, IL 60607

PHONE: 847-674-2300 | **FAX:** 847-673-2319 | **E-MAIL:** sales@lakeviewequipment.com

For more information visit our website at www.lakeviewequipment.com.